

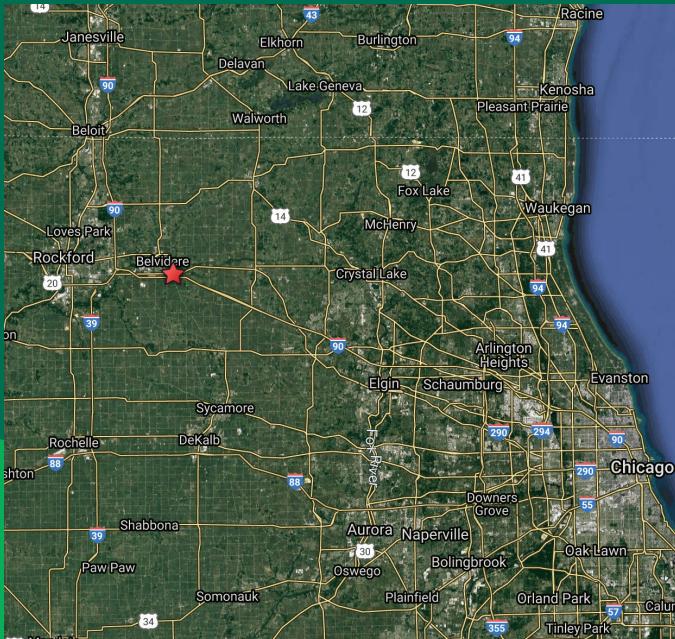
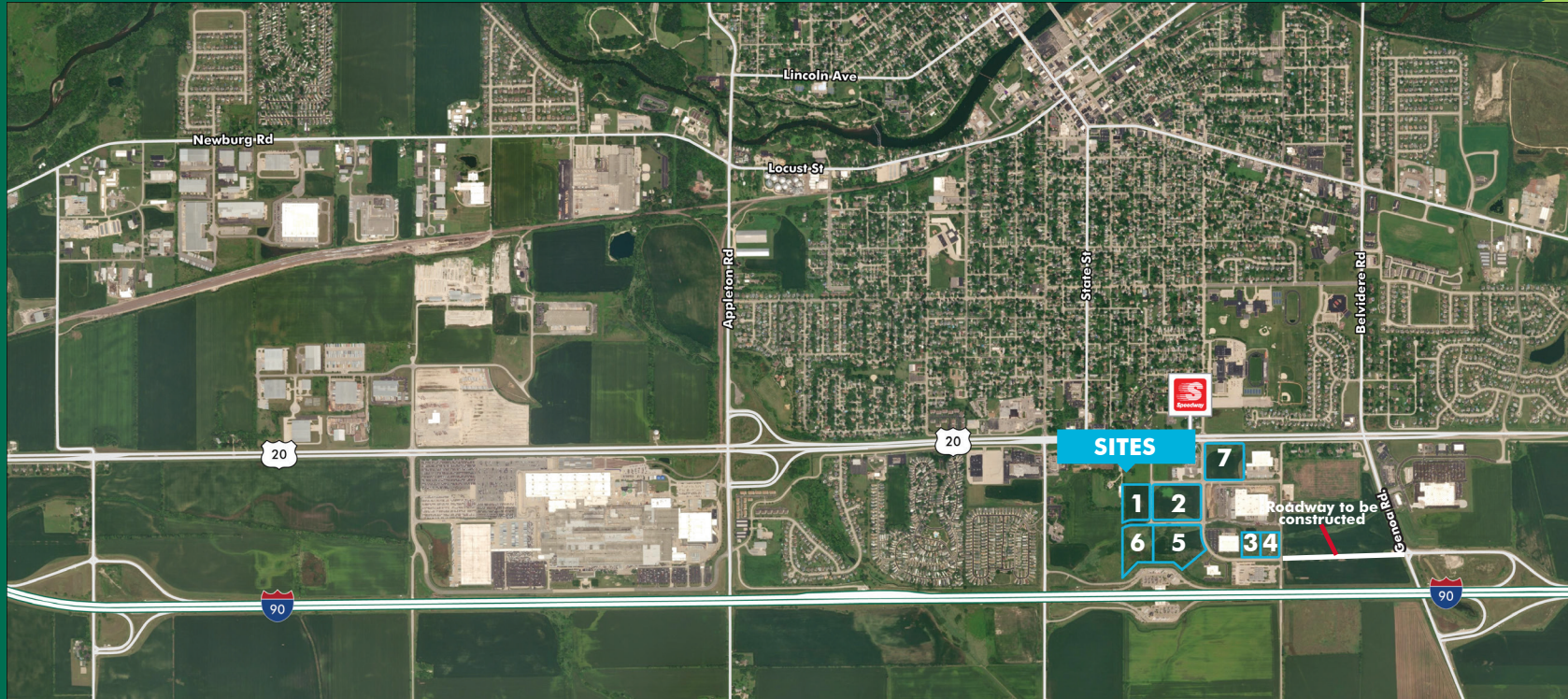
F O R S A L E

SAGER CORPORATE PARK LAND SITES BELVIDERE, IL



SITE FEATURES

- + Industrial Development Opportunity!
- + Build-to-Suit Opportunities
- + Land sites range from 2 - 37 acres
- + Situated in Belvidere's Sager Industrial Park
- + North of I-90 and south of Chrysler Dr. between the Genoa and Irene Rd. I-90 interchanges and convenient to both
- + Just east of FCA/Chrysler plant
- + Planned road extension from Genoa Rd. will provide quick access to I-90
- + Low Boone County taxes
- + Sale Price: \$2.75/SF - \$7.00/SF



ADDRESSES	ACRES	ZONING	PIN
#1 - 2171 Keene Pkwy	6.22 Acres	Belvidere PB	07-01-126-002
#2 - 444 Sager Ave.	11.39 Acres	Belvidere PB	07-01-128-001
#3 - 746 Crystal Parkway	2.72 Acres	Belvidere PB	07-01-251-003
#4 - 2389 Tripp Rd.	2.68 Acres	Belvidere PB	07-01-251-004
#5 - 493 Sager Ave.	11.88 Acres	Belvidere PB	07-01-176-006
#6 - XXXX Sager Ave.	7.62 Acres	Belvidere PB	07-01-176-004
#7 - 2091 Tripp Rd.	15.63 Acres	Belvidere PB	07-01-201-012

PLEASE CONTACT:

KAREN WALSH
 Senior Vice President
 +1 815 218 3438
 karen.walsh@cbre.com

© 2022 CBRE, Inc. The information contained in this document has been obtained from sources believed reliable. While CBRE, Inc. does not doubt its accuracy, CBRE, Inc. has not verified it and makes no guarantee, warranty or representation about it. It is your responsibility to independently confirm its accuracy and completeness. Any projections, opinions, assumptions or estimates used are for example only and do not represent the current or future performance of the property. The value of this transaction to you depends on tax and other factors which should be evaluated by your tax, financial and legal advisors. You and your advisors should conduct a careful, independent investigation of the property to determine to your satisfaction the suitability of the property for your needs. Photos herein are the property of their respective owners and use of these images without the express written consent of the owner is prohibited. CBRE and the CBRE logo are service marks of CBRE, Inc. and/or its affiliated or related companies in the United States and other countries. All other marks displayed on this document are the property of their respective owners.