



**PROPERTY HIGHLIGHTS**

*LandMark Real Estate Group is pleased to present the 50,000 SF of newer construction, high-bay warehouse / manuf. space at 725 Logistics Drive, Belvidere IL.*

- > **Available Space / Total Bldg.** 50,000 SF / 100,000 SF
- > **Office.** +/- 3,800 SF
- > **Interior Ceiling Heights.** 28'-32' clear
- > **Column Spacing.** 50' x 50'
- > **Loading.** (8) fully-equipped, raised docks  
(1) 14' x 14' grade-level door
- > **Fire Protection.** ESFR wet system
- > **Car Parking.** 55
- > **Services.** City water/sewer
- > **Power.** 1,000a/480v/3ph
- > **Lease Rate.** \$5.65 /sf/yr NNN
- > **CAMIT.** \$1.79

[www.LMCOS.com](http://www.LMCOS.com)

**FOR LEASE**

**50,000 SF of CLEAN, HIGH-BAY INDUSTRIAL**

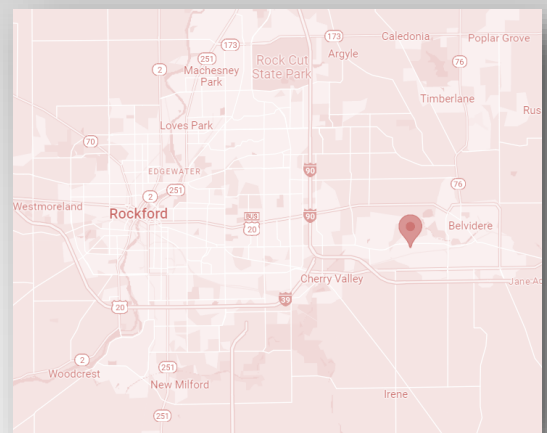
**C. Shane Van Sickle | [shane@LMCOS.com](mailto:shane@LMCOS.com)**

**M: 815.979.0242**

**W: 815.639.0034, ext. 16**

LandMark Real Estate Group  
6735 Vistagreen Way, Suite 100  
Rockford, Illinois 61107

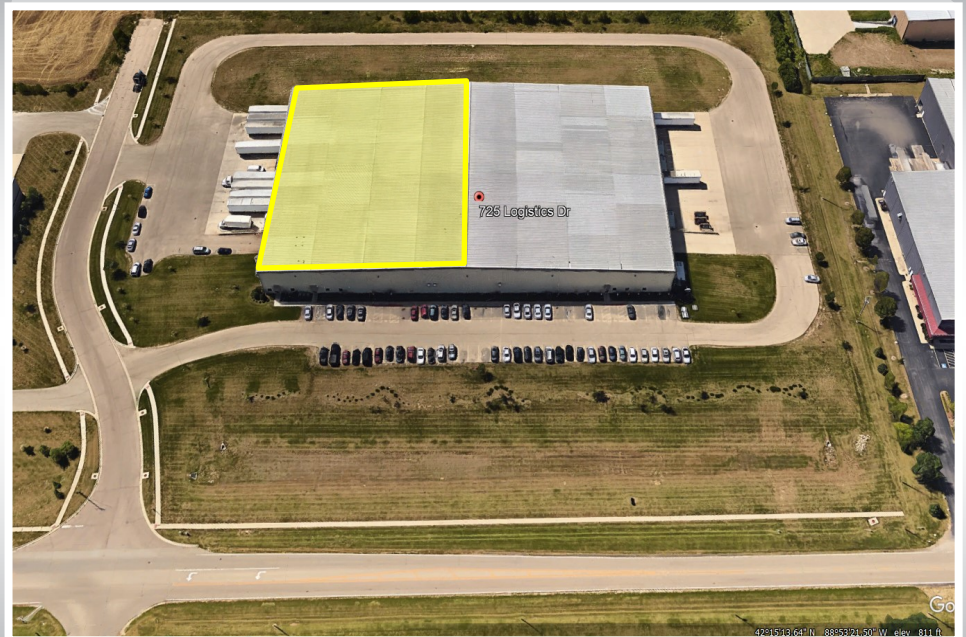
[www.LMCOS.com](http://www.LMCOS.com)

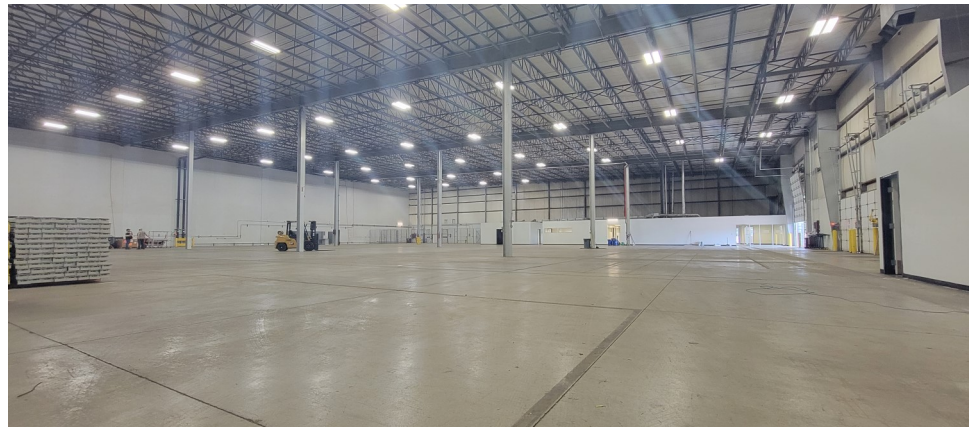
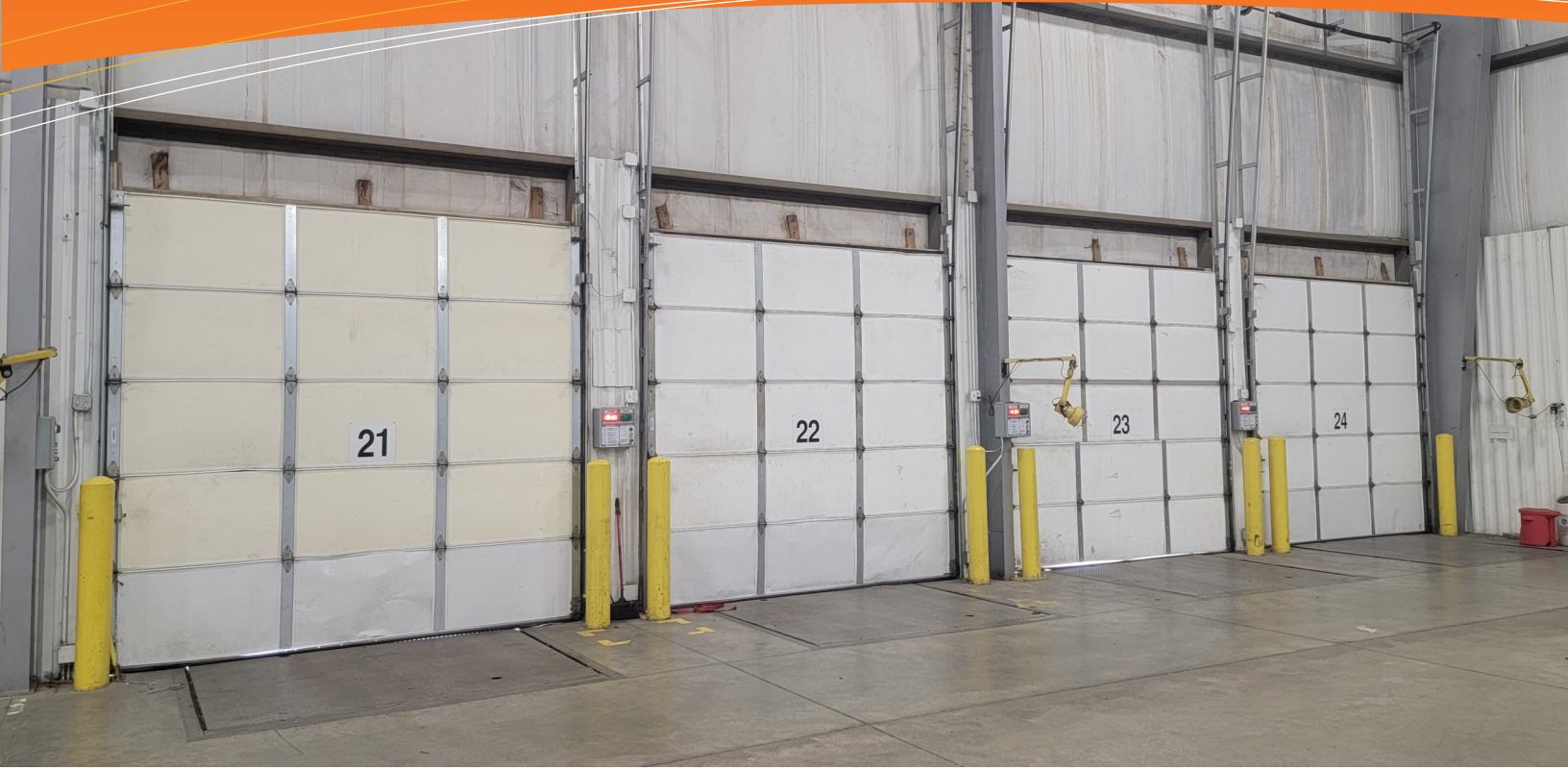


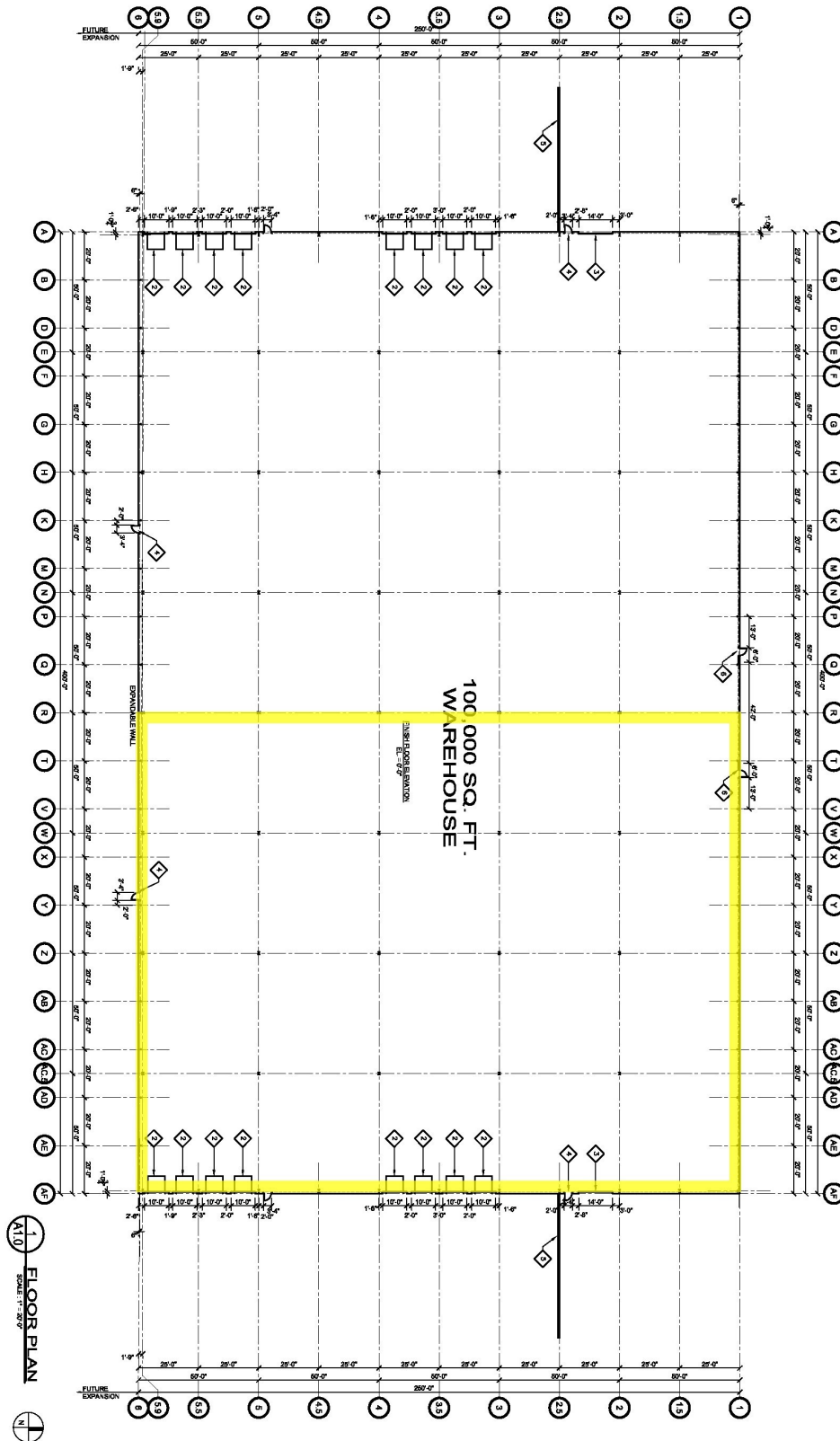


**PROPERTY LOCATION**

Belvidere, part of the Greater Rockford MSA of 370,000 residents, is centrally located 75 miles from Chicago and 70 miles from Milwaukee along the I-90 corridor. The market features a quality industrial labor pool, great utility and roadway infrastructure and has its own passenger and commercial/cargo airport at Chicago-Rockford International—home to the nation’s 2nd largest UPS air hub.







All information furnished regarding offerings of real estate is verified, however subject to errors, omissions, prior sale, rental, change in price, other conditions, and withdrawal without notice. Accuracy as to representation is not guaranteed and should be independently verified.